



**Address:**

Rouaanstraat 7  
9723 CA Groningen  
The Netherlands

Telephone: +31 (0)50 3600810

E-mail: [info@24-7mediatechnology.com](mailto:info@24-7mediatechnology.com)

[www.24-7mediatechnology.com](http://www.24-7mediatechnology.com)

## **Product Manual**

# **GlimmPod 33 QUICK START**

### **GLIMMPOD 33**



Front of the system



GlimmPod 33 on an adjustable stand



GlimmPod 33 with a simple poster

**VERY IMPORTANT.** DO NOT SWITCH THE SYSTEM ON WITH A MEMORY STICK IN THE USB PORT  
THE SYSTEM WILL TRY AND BOOT FROM THE MEMORY STICK AND FAIL. IF THIS HAPPENS, SHUT  
THE SYSTEM DOWN REMOVE THE MEMORY STICK AND RE START THE SYSTEM



**GlimmPod 33 THE BACK OF THE SYSTEM**

1. ON / OFF SWITCH
2. FAN (DO NOT BLOCK THE FAN OR THE SYSTEM WILL OVERHEAT)
3. POWER SUPPLY CABLE
4. USB CONNECTOR (USE THIS TO CONNECT MOUSE, KEYBOARD AND MEMORY STICKS FOR FILE TRANSFERS VIA THE SUPPLIED USB HUB)

Connect the supplied 4 way USB hub to the USB port (4)

You must plug in the keyboard, and mouse to the USB hub if you want to add or edit as listed below.

Switch the GlimmPod on (1) Please note when the system is switched on it will take approximately two minutes to automatically show the 3D images. You will see Microsoft Windows XP booting up when you switch the system on.

Please note **you must put the system onto a stand to make the display screen at eye height OR place on a desk and sit down to view. A poster in front of the system makes the 3D look more 3D.**

An adjustable stand is best so that you can get the height right. The middle of the screen should be approximately 1.66m high from the floor. If the screen is positioned too low or too high the 3D images will bleed off the screen and will not be easy to see. Obviously, very tall or very short people will not be able to see the images so easily. Set the system for the average height of your viewers.

## DESKTOP VIEW

To get access to the computers desk top (Windows XP) please press the SCROLL WHEEL ON THE MOUSE and hold it down for a few seconds. This makes the system close the 3D playback mode OR USE “alt F4” on the keyboard to close the program.

You will then see the computers desktop. Middle left is the shortcut to the **VIDEOS folder**. This is where you can add in new content (AVI files) or delete old content. From the desktop you can re-start the 3D playback mode at anytime by **double clicking short cut to V4 player icon**.

To download your new avi's, put them on a USB memory stick, plug in your memory stick into the USB Hub at the back of the system. Cut and past the avi's into the **VIDEOS** folder.

Please note to view the system when using it as a normal computer try and stand back at least 1.2m from the screen. The further back you stand the easier it is to see the entire desk top. The Gyro mouse is good for this but you can use an ordinary mouse if required.

## YOUR AVI FILES MUST HAVE BLACK ALL AROUND THEM FOR THEM TO LOOK 3D.

To switch the system off either **switch it off at the back, see page 2** or **switch it off at the mains**.

## YOU DO NOT HAVE TO SHUT DOWN THE COMPUTER TO SWITCH THE SYSTEM OFF

Switch the computer off before removing anything attached to the USB port

Please see our “How to produce content” document for further information on how to produce content

Any questions please email [info@24-7mediatechnology.com](mailto:info@24-7mediatechnology.com)

The system comes with a 12 month back to base warrantee.

The system is a licensed product. If 3D adverts are sold to a third party, 20% of the gross revenue is payable to Wonderworks Media Ltd.

## HOW TO CREATE A PLAYLIST HoloPlayer V4 Function List

HoloPlayer V4 (holoplayer v4.exe) is a multipurpose video player.

- Plays AVI, MPG, WMV, and DVD video formats
- Timer functions – player can be set to run any video at any time. Timer setting functions include Daily Mode and Common Mode. The timer can also be used to shutdown the system.
- Videos can be played within a graphic JPG skin. The skins can be created from any JPG file.
- Videos can be played within an AVI video skin. The video skins can be played simultaneously with a video, video can be played on video, a video can be played with a static image, and a variety of additional combinations are possible.
- Videos and skins can be dynamically resized on screen without the need for sophisticated external editing programs.

- Videos can be repositioned on the screen to allow for special effects.
- Built-in settings to create a floating image from a static image.

# HoloPlayer Main Menu and Controls


HoloPlayer V4 uses three keystrokes to control edit and play modes: Ctrl-H, Ctrl-X, and Ctrl-Z.

(Ctrl-X) Play Next Video

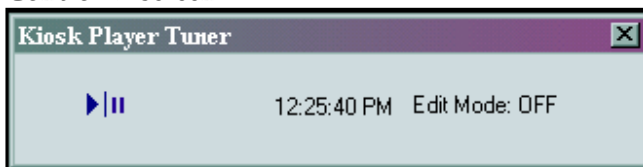
(Ctrl-Z) Play Previous Video

(Ctrl-H) Main HoloPlayer Menu

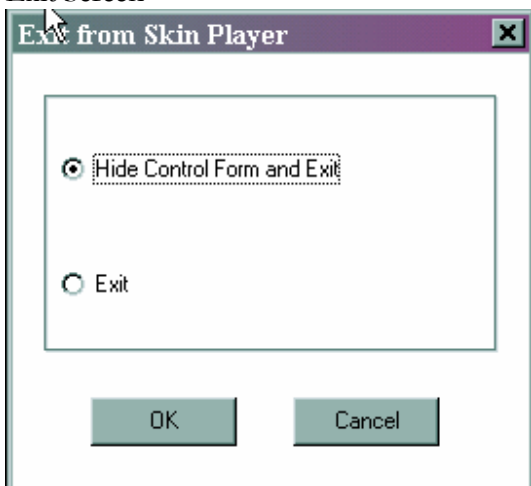
HoloPlayer V4 is loaded automatically at Holo startup but can also be accessed by clicking on the HoloPlayer on the Windows desktop or by clicking on the 'holoplayer v4.exe' application that is in the folder c:\HoloVision. The key combination Ctrl-H will display the HoloPlayer menu that is used to control and adjust the player. Pressing the key combination a second time will close the menu. Click on the 'Edit Mode' area to turn edit mode on.

Exiting the menu by clicking on close window  will allow the player to be stopped and the menu in figure # will appear. You will be given two menu choices: 'Hide control form and exit' or 'exit'. Choosing 'Hide control form and exit' will cause the setup menu to be hidden next time the HoloPlayer is started. Choosing 'exit' will cause the menu to be visible next time the HoloPlayer is started.

Control-H screen



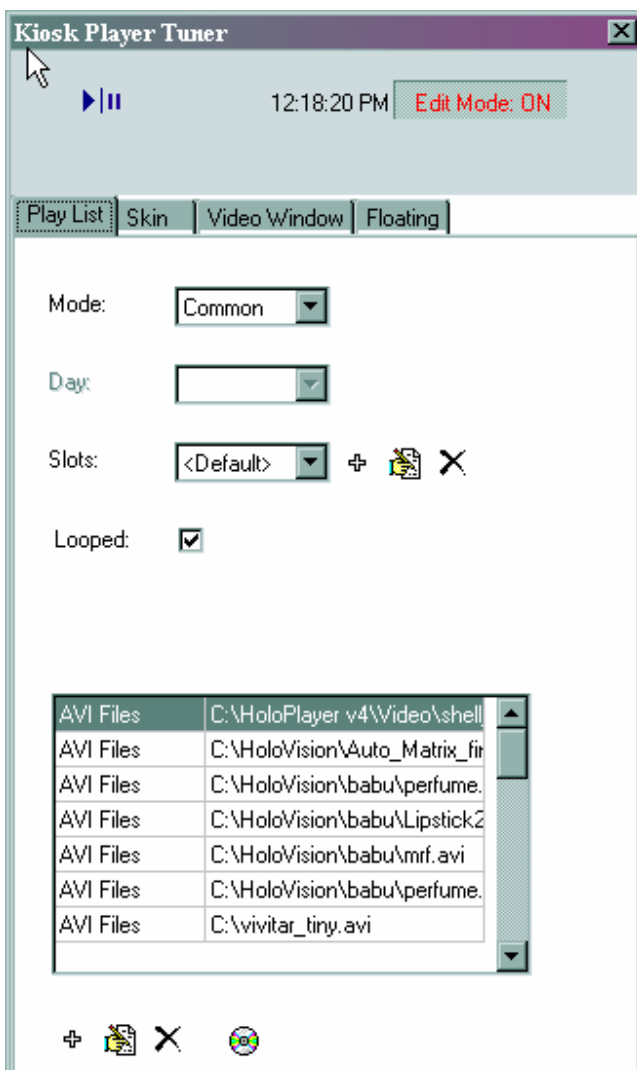
Exit Screen



# Working with HoloPlayer V4

HoloPlayer V4 uses many standard Windows type menus and controls; this makes HoloPlayer an easy player to learn and use. The HoloPlayer has four menus that are used to control all of the player's features and controls. The 'Play List' menu is shown in figure #. This menu is used to select a play source: AVI, DVD, or Live Video. You can also select to use the programmable timer which will allow any combination of the player sources plus the ability to shut down the computer at a set time.

Figure #. Play List Menu



There are four actions that can be setup on the timer:

Play AVI

Play DVD

Play Live Video

Turn OFF the Computer

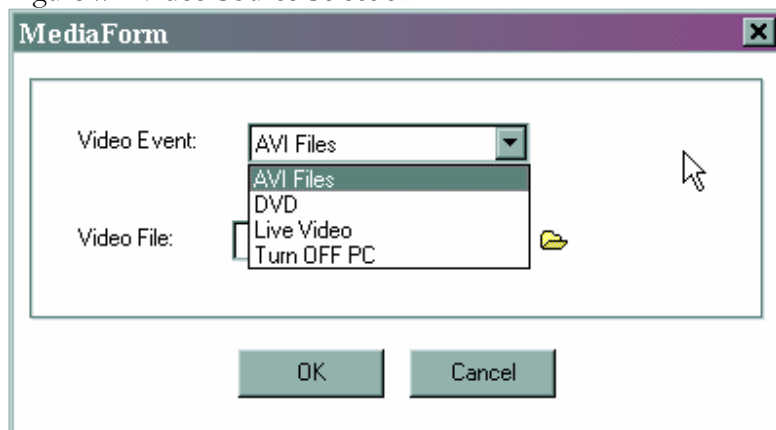
'Play AVI' is used to load the videos you want to play. The format can be AVI, MPG, or WMV.

'DVD' is used to play videos that are in a DVD format. The DVD videos should first be copied to the computers hard drive for maximum play efficiency but can be run from the DVD drive.


'Live Video' is for use with a web style video camera.


'Turn OFF PC' is used to shutdown the computer at a set time.


Figure #. Video Source Selection




### Adding Videos and Events to the Play List

To add a video event to the play list, when in 'common' mode, click on the  at the bottom of the play list menu (figure #) and select the event type as shown in figure #. Then select the desired files by clicking on the browse tab. You can select multiple files by typing Ctrl-A. The videos or selected events are added to the play list.

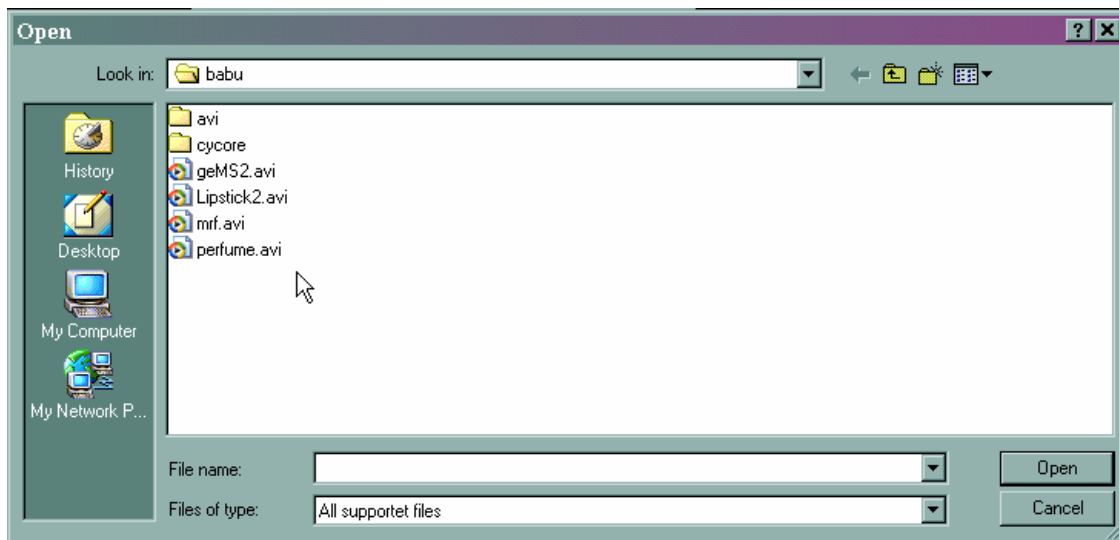
When the mode is set to 'daily' you first choose a date and time to run the video event and then use  menu to choose the events you want to run at the set time.

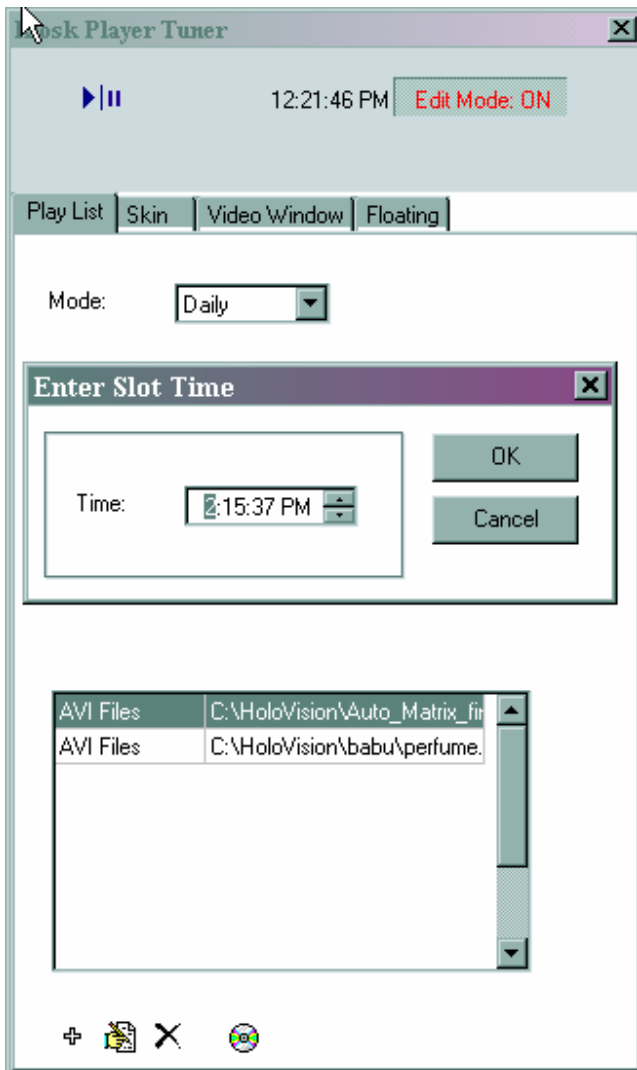
Check the  looped: ☒ box if you want the event to run continuously. The videos or events will loop until the next timed event.

The  icon is used to edit the selected item.

The  is used to delete the selected item.

## Browse Menu





## Using Skins

### Holoplayer V4 'Skin' settings screen

This screen is used to select and adjust the skin that will surround the video. The skin can be a jpeg or another video depending on which file button is chosen:

 JPEG skin

 Video skin

 No Skin

You can dynamically set the size of the jpeg skin or video skin using this screen.

To play video content without a skin, click on the eraser  on the skin menu. This will remove the skin and play the video on a black background only.



The video will need to be set to the appropriate size and appropriately positioned using the Video Window controls after a skin is selected.

Figure #. Skin Menu

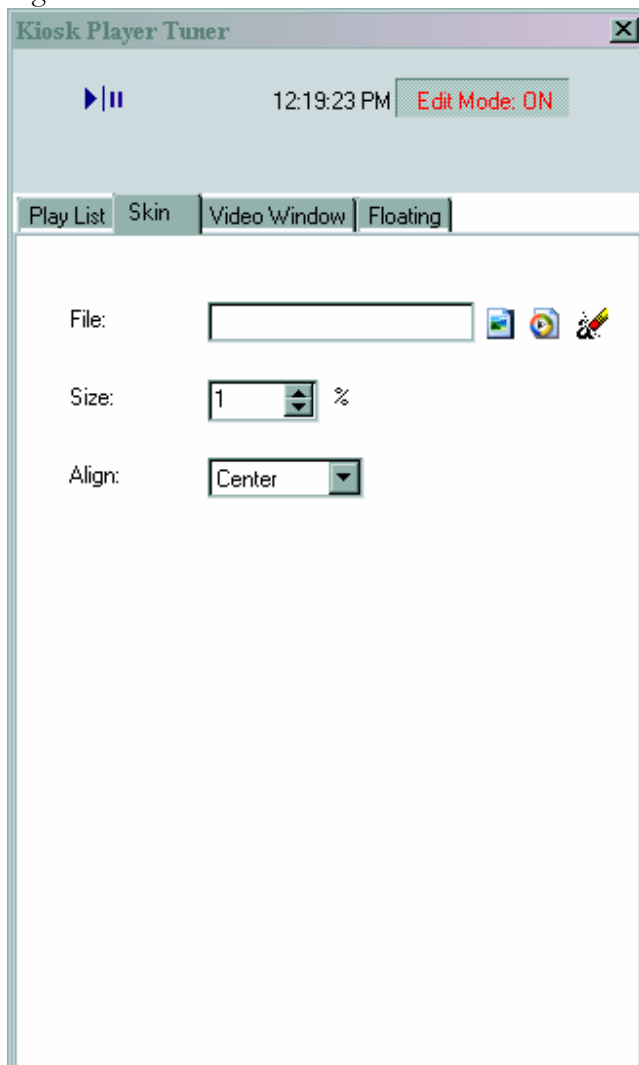


Figure #. TV skin with video



Figure #. Static Image with Video



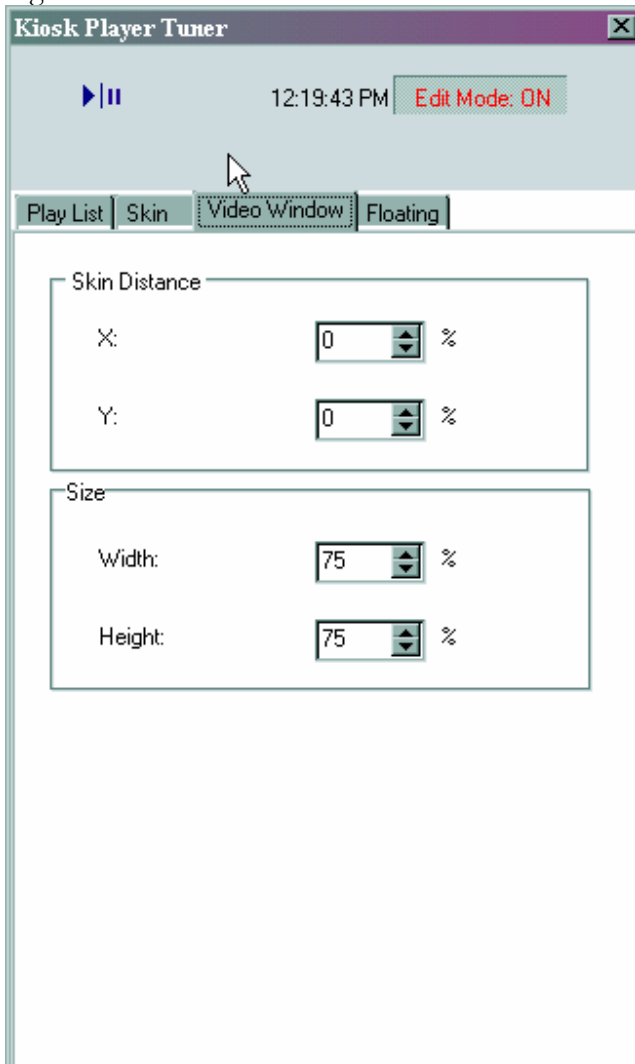
### **Video Window Size Adjustment**

Holoplayer V4 has the ability to adjust the size of the onscreen video to any size desired; from tiny to large. This results in a considerable cost reduction during content production because only one video needs to be created for all models of the product. Previously to Holoplayer V4 it was necessary to produce content for a specific Holovision model to match its optical system.

The ability to adjust the size of a JPG and video skin is also possible which provides the same benefits. Figure # shows the menu screen used to adjust the video's size and position.

This window is also used to adjust the position of the active video using X and Y coordinates.

Figure #. Video Window



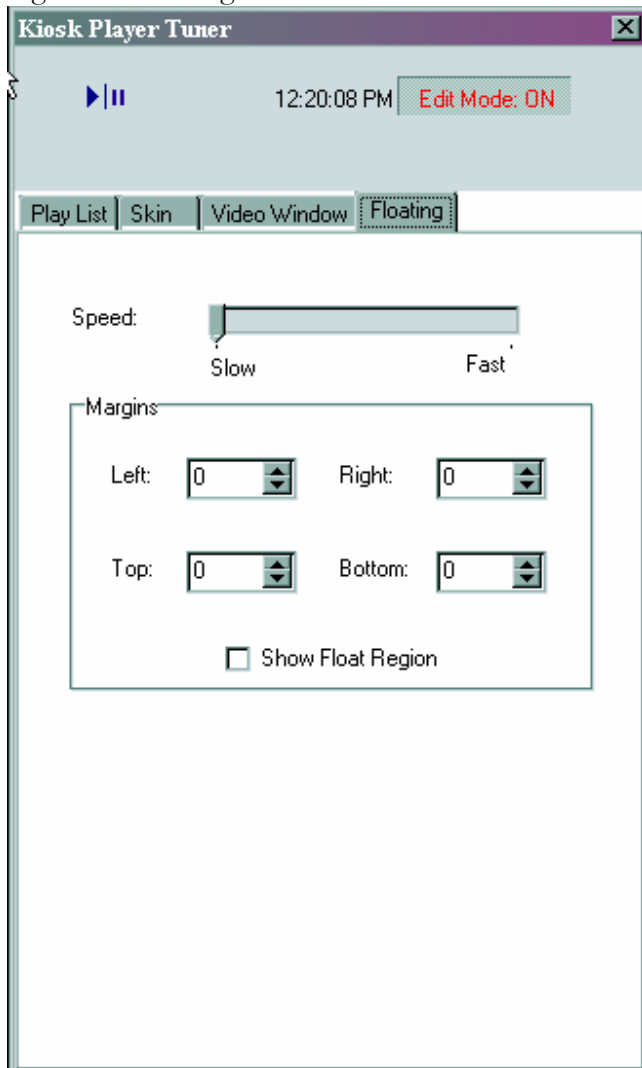
### Holoplayer V4 'Floating' Menu

Holoplayer V4 utilizes a floating algorithm that is adjustable from the 'Floating' menu. The float algorithm can be adjusted to create special effects depending on the video content, skin used, location used, lighting condition, and video size.

Clicking on the 'show float region' box will show the region that the video will be allowed to move. With the regions visible on the screen it is easier to properly set this option with the 'margin' and 'speed' controls. Unclick this box to return to normal screen mode.

Improperly setting the float control will cause the video to move erratically. It is important to carefully set this option and to unclick the 'Show Float Region' when the adjustments are complete.

Figure #. Floating Menu



## Player control summary:

### Simultaneous Video Operation

Holoplayer V4 has the ability to run two videos on the same screen simultaneously. This feature allows interaction between videos that produce special effects that cannot be produced with any other method. Background special effects such as a star field displayed behind a floating image, one video mingling/interacting with another, a 2D video interacting with a 2D video, or a small video can dance around a large video.

### DVD Mode

Holoplayer V4 can run a DVD movie full screen or in a window one inch square. The DVD chapters can be organized to play in any order. The DVD menu can be controlled with a mouse or through automation via configuration file. The control of the DVD window allows a user to click on the DVD's main menu to choose an option, even if the DVD window is shrunk to a one inch size. The DVD movie can run while a commercial in 3D or 2d plays in the background, foreground, or next to the commercial. This allows for the ability to play hit movies

while running commercials next to/simultaneously with the movie. Due to the nature of DVD copy protection, some DVDs may not play properly, this is not a limitation of Holoplayer V4 rather it is dictated by designers of undocumented, bizarre copy protection schemes.

### **Video Mode**

Video mode has the same characteristics as the DVD mode; automation by configuration file or direct interaction with a menu to load and run videos. In any mode, including video mode, it is possible to display a static image while a video plays on the same screen.

### **Live Video Mode**

This mode allows input from any web cam that is connected to the computer. All screen adjustments and skins available in video and DVD mode are available for this input as well.

### **Play List Menu**

Live video – Webcam video in a skin  
DVD – DVD Movie or DVD file  
Video Files – AVI, WMV, MPG videos  
Programable Timer

### **Skin Menu**

Adjust size of skin  
Choose desired skin  
Choose location of skin

### **Video Window Menu**

X/Y adjustments to position video on screen  
Video size to adjust size of video

### **Floating Menu**

Adjustments for video floating

For further info contact [info@24-7mediatechnology.com](mailto:info@24-7mediatechnology.com)  
Telephone: +31 (0)50 3600810