

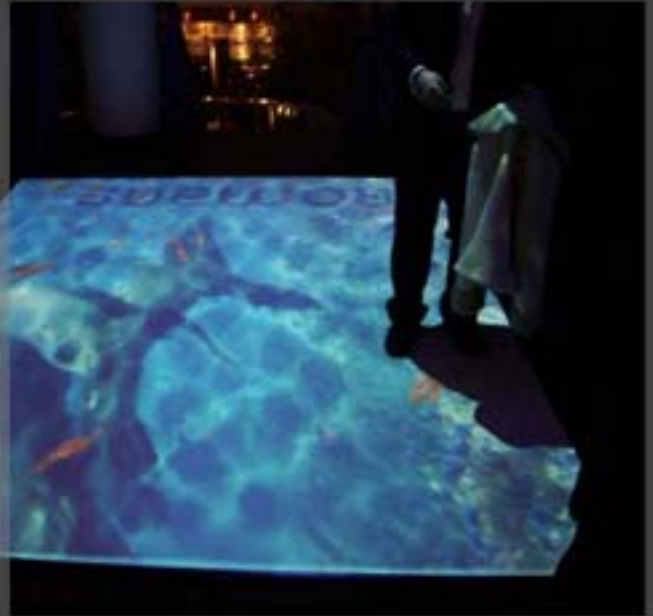
# 24/7 Media

## Interactive Projection Systems

An unusual and exciting product that combines all the fun elements of dancing flames, shimmering water, floating fish, magical stars, blooming flowers, fluffy clouds and visual auras with the element of surprise, into one single system.

The Interactive Media System is unusual, exciting, and modern. It not only reacts in real time, but in a unique way can create and send powerful messages by way of advertising, brand reinforcement and establishing corporate identity.

With over 100 different effects and themes, you will find the system suitable for any occasion.



Imagine for a moment, if you will, walking into a seafood restaurant, over a swimming pool filled with shimmering water, fish swimming through the water and beneath the restaurant's logo. Then, as you walk, you hear and see ripples in the water, and the sealife dart away from your feet. This is all possible with the Interactive Media System.

Similarly, if you place this system into a corporate function, guests can walk over the pool and corporate logo at the beginning of the event, but part way through the scene changes and the system presents something else — Hundreds of logos scattered across the floor and repel from any movement, or giant flame effects engulfing anyone who steps on the floor. How about an interactive game of Soccer or Air Hockey? Anything is possible!



Telephone: +31 (0)50-3600810  
E-mail : [info@24-7mediatechnology.com](mailto:info@24-7mediatechnology.com)  
Website : [www.24-7mediatechnology.com](http://www.24-7mediatechnology.com)

# ADVIS 2.1

## Features

The latest version of AdVis has many advanced features, yet has been designed to be extremely easy to set up and use.

The AdVis Effect Launcher is the core behind the Interactive Projection System. From here you can configure and set up the interactive projection systems, edit and launch effects and create sequences for effects to run for different durations and move seamlessly onto the next effect.

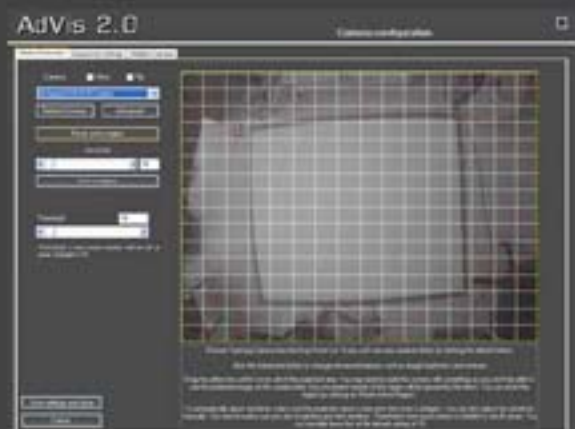
### AdVis 2.1 Features

**Component based:** You only purchase the effects you need. You can easily upgrade to a complete package or add effects as and when you need.

**Simple setup:** Once you have installed the tracking camera, the software takes care of the rest. Enter configure AdVis to see the camera feed and you can crop the feed for perfect alignment to your projection surface. Use automatic setup to configure sensitivity settings and the system is ready to run.

**Sequencer:** Create playlists so different effects can run for different durations and seamlessly move on to the next effect.

**Customisation:** Every effect has a configuration program where you can completely customise it. Like a mini-SDK, you can change images, videos, sounds, objects and change all the settings related to the effect giving you the opportunity to create hundreds of new effects.



Telephone: +31 (0)50-3600810  
E-mail : [info@24-7mediatechnology.com](mailto:info@24-7mediatechnology.com)  
Website : [www.24-7mediatechnology.com](http://www.24-7mediatechnology.com)

# ADVIS 2.1

## Advanced Features

AdVis also has many advanced features for specialised installations. All these features come as standard:

### Scheduler with Transitions:

You can build different sequences made up of either our base effects or your custom designed effects. You can set how long each effect runs for and have a transition of your choice between effects. You can also skip to the next or previous effects using a keyboard or remote control.

### Masking:

You can apply masks to effects to create customised displays which move away from the traditional square interactive floor. By applying a mask, you can create any shaped interactive floor, circles, triangles, winding paths, any shape you like! There are also two extra image mask layers above and below the effect.

### Automatic Restart:

If anything should happen such as a power failure, AdVis can be set up to automatically start with windows and boot straight into the effect sequence. It can also be setup to restart the PC at a certain time of day.

### Networking:

Advis can be run in a similar fashion to a Digital Signage Network. AdVis Installations can be set up as clients and connected to a network or the internet. You can have an AdVis system set up as Master, and then each client can periodically connect to the Master PC and check for updates. If there is an update to the schedule or content, then the client will automatically download the new schedule/content without disrupting the currently running scheduler/effect. When the client is up to date, it will automatically start the new schedule. People viewing and interacting with the Client System will see no disruption whatsoever and can immediately start interacting with the new content.

### Multiple Projections:

AdVis can support up to four tracking kits and four projectors from one PC (subject to graphics card), enabling customised installs such as long walkways or extra large interactive floors. AdVis has built in edge-blending and edge-overlap technology to create seamless displays and saving on expensive edge-blending hardware. You could create an extra long walkway or wall using four projectors edge-blended together, and then apply a mask to create something completely new and different.



Telephone: +31 (0)50-3600810  
E-mail : [info@24-7mediatechnology.com](mailto:info@24-7mediatechnology.com)  
Website : [www.24-7mediatechnology.com](http://www.24-7mediatechnology.com)



# ADVIS

## Interactive Software Effects

Our software is modular based with a built-in motion detection engine. Each effect can run on its own or seamlessly integrate with each other to create a continuously changing environment.

 <p><b>Interactive Fish Effect</b></p> <p>Realistic Interactive Water Effect with an abundance of interchangeable sea life which respond to your every movement. Customisable Background and logo overlay.</p>	 <p><b>Interactive Football Pitch</b></p> <p>Interactive Football pitch with customisable pitch and football, goals to win, advertising banners and logo overlays.</p>
 <p><b>Interactive Fire Effect</b></p> <p>Stunning flame effect surrounds your movement like an incredible visual aura. Customisable background and logo overlay. Adjustable flame intensity and sensitivity.</p>	 <p><b>Interactive Animation Effect</b></p> <p>You can fill the display full of animated graphics and have the animation change as the display detects movement.</p>
 <p><b>Interactive Trail Effect</b></p> <p>Leave behind a trail of images such as blooming flowers wherever you walk. Customisable background, images and logo overlay.</p>	 <p><b>Interactive Air Hockey</b></p> <p>Interactive Air Hockey Pitch with customisable pitch and pucks, goals to win, advertising banners and logo overlays.</p>

The ability to purchase our software in modules makes the system much more affordable. For instance, if you only require the fish effect, it can be purchased separately, instead of having to buy a whole package.


Combined with our Infrared Tracking kit, the software can be easily installed on a PC and run through a projector giving you the ability to create stunning interactive effects on the walls, floors, ceilings, in fact, any projection surface!



Telephone: +31 (0)50-3600810  
 E-mail : [info@24-7mediatechnology.com](mailto:info@24-7mediatechnology.com)  
 Website : [www.24-7mediatechnology.com](http://www.24-7mediatechnology.com)

# ADVIS

## Interactive Software Effects

 <p><b>Interactive Reveal</b></p> <p>Customisable objects that move away from your movements. Reveal Images and video beneath the objects. Customise objects (size and quantity) and backgrounds. Insert video underlays and logo overlays.</p>	 <p><b>Interactive Splat Effect</b></p> <p>An addictive interactive game where the audience jump on all sorts of strange creatures and splat them to reach a high score. Hours of entertainment!</p>
<p><b>Interactive Air Drums</b></p> <p>Play the drums on the floor or wall with this virtual drum kit. Just hit or kick the different drums and cymbals. You can also change the sounds for your own as well as change the background or playback a music video behind the drums!</p> 	 <p><b>Interactive Meteors</b></p> <p>Jump on the spinning meteors to explode them. You can change the size and quantity of meteors as well as change the background, replace sounds and insert logos and videos</p>
 <p><b>Interactive Invaders</b></p> <p>Squash the martians as they invade, as hard as you try, they keep coming back. You can change the quantity and speed as well as replace the background with an image or video.</p>	<p><b>Interactive Tile Flip</b></p> <p>Flip the tiles to reveal the image or Video beneath. Create great effects such as venetian blinds or twirling tiles or even flip the whole image.</p> 

## Custom Interactive Effects



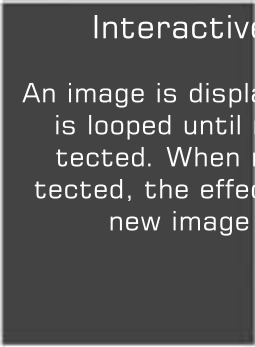

We can custom build your very own interactive program. Our unique modular technology allows us to create an infinite amount of stunning effects, designed however you want and easily integrated into an existing system. Please contact us for a quote.



Telephone: +31 (0)50-3600810  
 E-mail : [info@24-7mediatechnology.com](mailto:info@24-7mediatechnology.com)  
 Website : [www.24-7mediatechnology.com](http://www.24-7mediatechnology.com)

# ADVIS

## Interactive Software Effects

	<h3>Interactive Alpha Reveal</h3> <p>This effect consists of two layers which can either be an image or video. As you move across the display, the top layer fades into the bottom layer.</p>		
	<h3>Interactive Switch</h3> <p>An image is displayed, or a video is looped until motion is detected. When motion is detected, the effect fades into a new image or video.</p>		<h3>Static Effect</h3> <p>You can also playback a standard video or display an image. This is a non-interactive effect.</p>

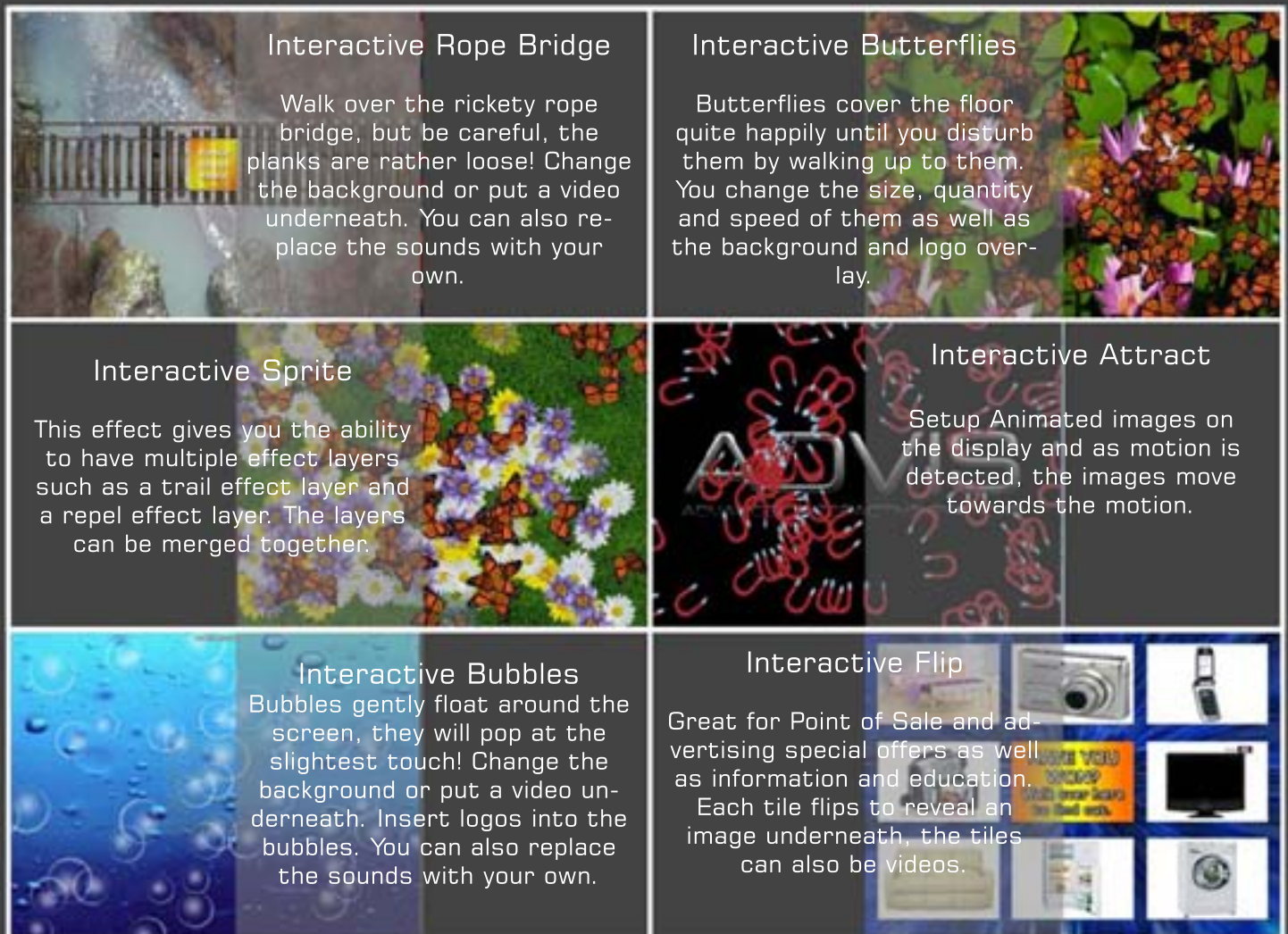


Telephone: +31 (0)50-3600810  
E-mail : [info@24-7mediatechnology.com](mailto:info@24-7mediatechnology.com)  
Website : [www.24-7mediatechnology.com](http://www.24-7mediatechnology.com)



# ADVIS

## Interactive Software Effects



## Configuration Programs

Each effect comes with it's own configuration program so you can completely customise it. You can insert your own logos and backgrounds as well as put a video clip underneath. You can replace any image or object with your own and you can change all the settings such as quantities, speeds, durations, sizes, etc.



Telephone: +31 (0)50-3600810  
 E-mail : [info@24-7mediatechnology.com](mailto:info@24-7mediatechnology.com)  
 Website : [www.24-7mediatechnology.com](http://www.24-7mediatechnology.com)



# ADVIS

## Interactive Software Effects

This is just a small selection of our effects and themes:



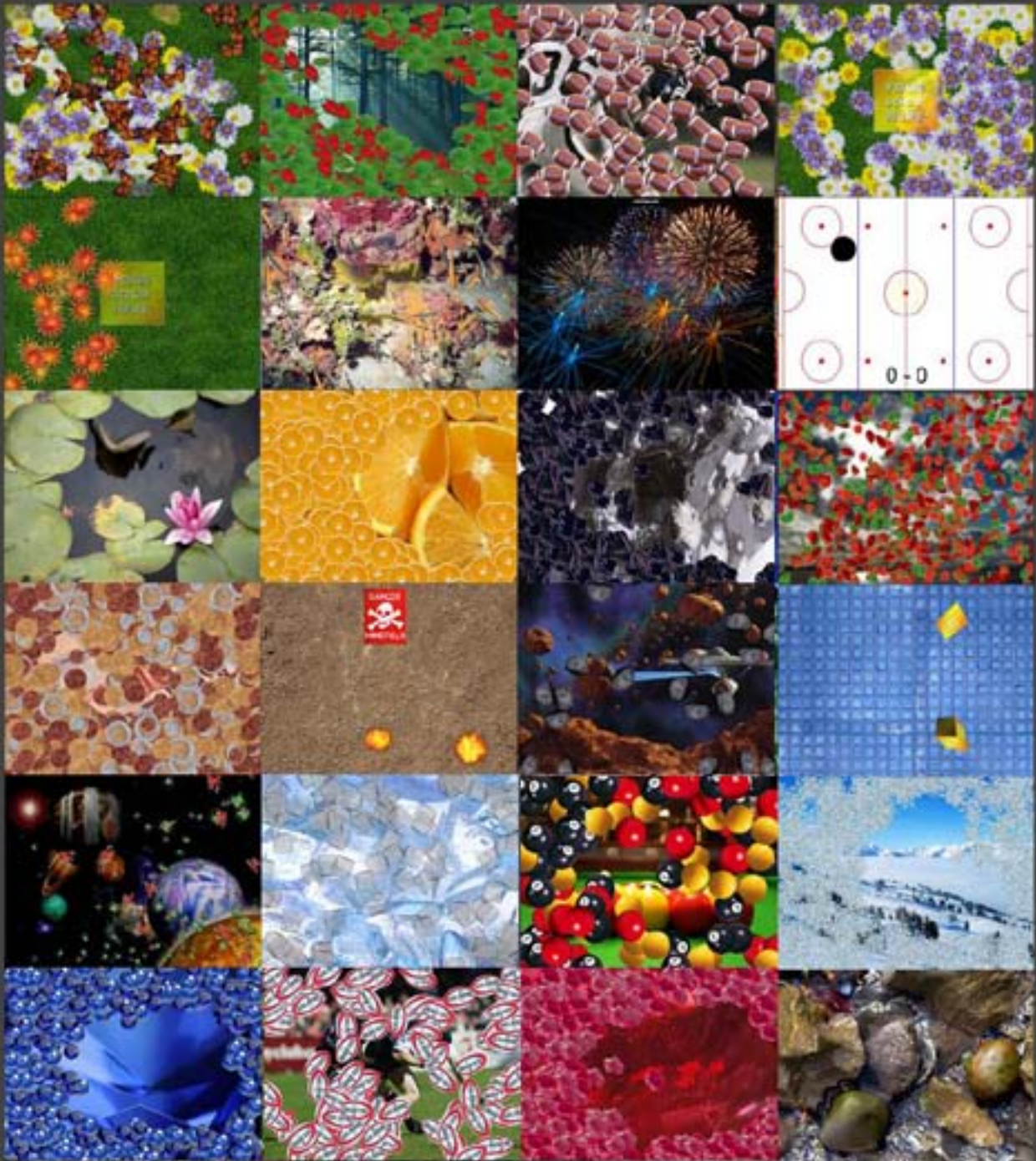
Telephone: +31 (0)50-3600810  
E-mail : [info@24-7mediatechnology.com](mailto:info@24-7mediatechnology.com)  
Website : [www.24-7mediatechnology.com](http://www.24-7mediatechnology.com)



# ADVIS

## Interactive Software Effects

This is just a small selection of our effects and themes:



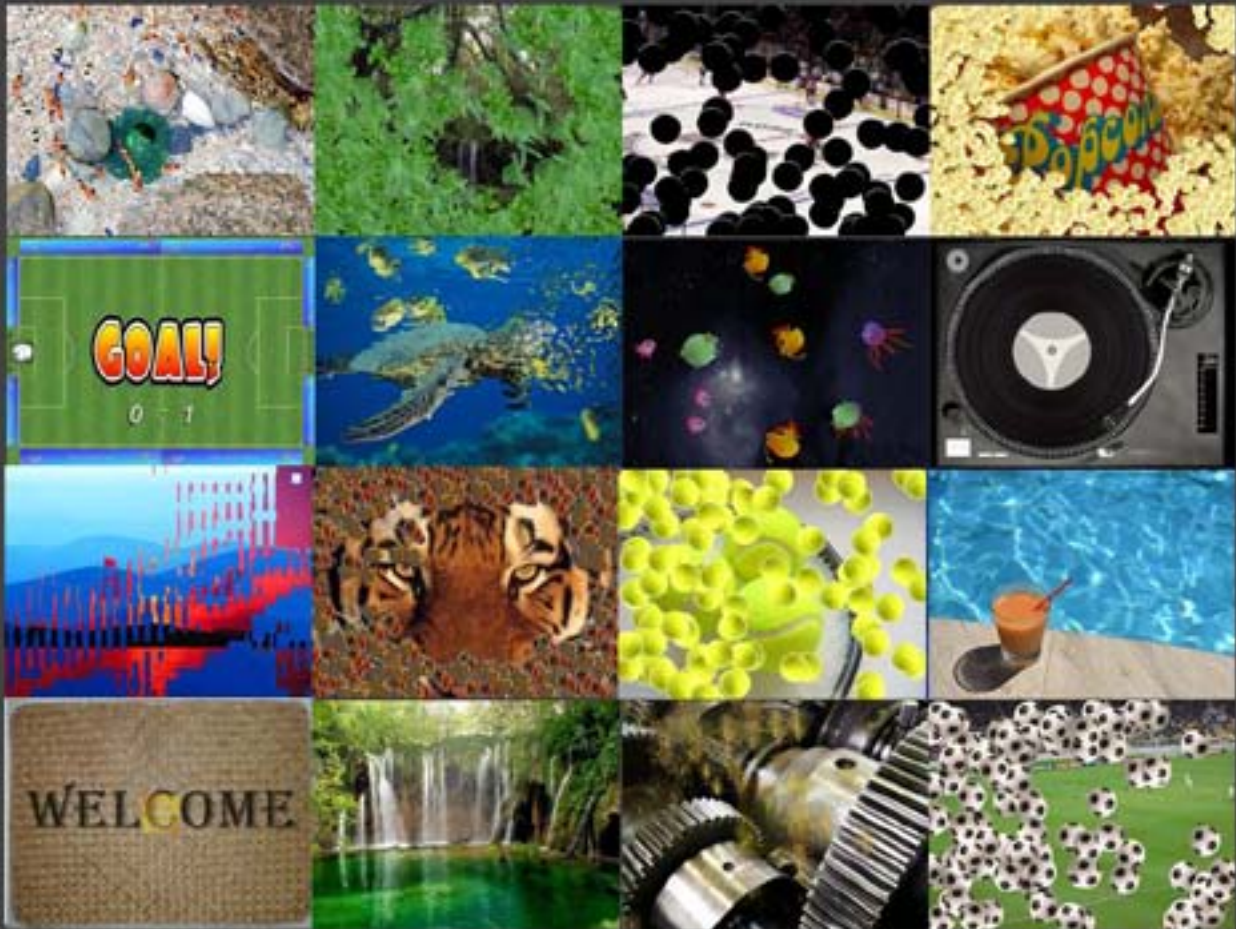
Telephone: +31 (0)50-3600810  
E-mail : [info@24-7mediatechnology.com](mailto:info@24-7mediatechnology.com)  
Website : [www.24-7mediatechnology.com](http://www.24-7mediatechnology.com)



# ADVIS

## Interactive Software Effects

This is just a small selection of our effects and themes:



Telephone: +31 (0)50-3600810  
E-mail : [info@24-7mediatechnology.com](mailto:info@24-7mediatechnology.com)  
Website : [www.24-7mediatechnology.com](http://www.24-7mediatechnology.com)



# ADVIS

## Interactive Hardware

### ADVIS Infrared Motion Tracking Kit

The high-resolution tracking kit is specifically designed to be able to detect motion at a high frame rate and relay the detected motion to the ADVIS player. The ADVIS player is the core behind our interactive effects as it processes the motion detection in real time, relaying it to the Interactive Effect. The kit isn't affected by multiple people interacting on the same floor, whether it's one person or one hundred, the movement is processed and the effect displayed!

The kit comes with its own mount that can be attached to the ceiling or a wall. The system is very easy to install, and with new cropping functions built into the AdvVis Player, setup is simply a matter of lining up the tracking hardware with the projection area. In AdvVis, you drag a box around the projection area for a perfect setup every time!



The kit is connected to a PC via a USB port, which makes it very easy to install. Unlike some systems, you don't have to take the PC apart to install it!

We also supply power and data extension cables so you can locate the PC wherever you want. With some systems, the PC must be located within 5 metres which can be difficult in some situations.



Telephone: +31 (0)50-3600810  
E-mail : [info@24-7mediatechnology.com](mailto:info@24-7mediatechnology.com)  
Website : [www.24-7mediatechnology.com](http://www.24-7mediatechnology.com)

# ADVIS

## Minimum Requirements

To create a complete Interactive Projection System you need the following:

ADVIS Infrared Motion Tracking Kit  
ADVIS Interactive Software Effect  
Computer System  
Projector  
Rigging

### Computer System Recommended Specifications:



AMD Athlon Dual Core 4600+  
1GB DDR Memory  
40GB Hard Drive  
CD-ROM  
256MB 3D Nvidia 8600GT Graphics  
1 x Free USB 2.0 Port

Wireless Keyboard and Mouse

### Projector



The projector you should use with our system depends on different factors like the brightness of the room, the size of the image you want to project and the height the projector will be located.

You can also use different lenses to project different sized images or project from different heights.

We recommend a minimum of 4500 lumens for an average room. 3000 lumens or more is sufficient for a dark room.

The image will be brighter on a light coloured surface. Placing a white Vinyl on the floor may be required



Telephone: +31 (0)50-3600810  
E-mail : [info@24-7mediatechnology.com](mailto:info@24-7mediatechnology.com)  
Website : [www.24-7mediatechnology.com](http://www.24-7mediatechnology.com)



# ADVIS

## Minimum Requirements

### Rigging

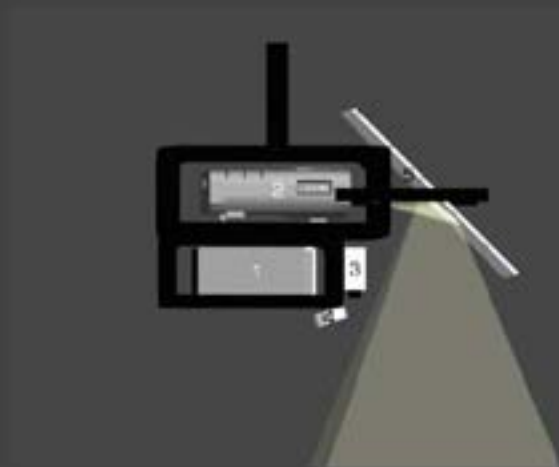
The complete system can be setup in many ways, and it differs when you want to project onto the floor or the wall.

For floor projection, the projector needs to be above the floor and project down. There are two ways to do this, you can either use a projector that can be mounted vertically and project straight down, or using a first surface mirror, you can reflect the image onto the ground

The tracking kit also needs to be mounted above the floor and aligned to the projected image. The closer to the centre of the image the tracking kit is, the more accurate the effects will be.

The computer can either be mounted with the projector and tracking kit or stored in a separate location by using longer cables.

Below is a suggested mount which contains all the components of the interactive system and is ceiling mountable:



1. Computer with ADVIS Player and Effects
2. Projector
3. Tracking Kit Camera
4. Tracking Kit IR Illuminator
5. First Surface Mirror



Telephone: +31 (0)50-3600810  
E-mail : [info@24-7mediatechnology.com](mailto:info@24-7mediatechnology.com)  
Website : [www.24-7mediatechnology.com](http://www.24-7mediatechnology.com)